



**Welcome to ReFresh at Emmanuel
(Restoring Energy, Faith, and Relevance to Every Soul's Heart)
April 26, 2026 - Theme: Earth Day**

Welcome to ReFresh at Emmanuel

Welcome Visitors! We extend a special welcome to our visitors. Thank you for worshiping with us. We strive to live as a Safe and Healing Spiritual Community for all who come, regardless of socio-economic status, race, sexual orientation, gender identity, gender expression, or spiritual path. All are welcome in this holy space.

We invite you to worship with us on Sundays at our 9:00 am Calvary/Emmanuel Traditional Worship Service in the chapel or our ReFresh 10:30 am Service either in person or on ZOOM. The Recorded Service is available on Facebook after the service.

To gather online by computer, tablet, or smartphone, use the following link.
<http://us02web.zoom.us/j/82726742888?pwd=WFEwOVBXZGd3OHFzSXQ1WXIVTHppZz09>

Don't forget to sign the greeting cards for our Emmanuel Family Members.
The cards are on the table in front of the Celebration Room.

Assisting in Worship Today

Presider: Pastor Frank Langholf

Lector: Susan Goldberg

Special Music: Kelli and Josh Luebke

Accompanist: Clea Arbogast

Altar Guild: Kristie Heath-White & Bob Matheson

Consultant: Bill Houtkamp

Sound: Andrew Ehrhardt

Greeting Cards: Taj Guzzardo

Yoga With Claudette Pirrello, Mondays at 5:00 pm & Thursdays at 1:00 pm

Cardio Drumming, Mondays at 4:00 pm, Call Beth, (815) 742-0548, to join

Spiritual Journey's on Tuesdays, 9:30-11:30 am on Zoom

Bible Study on Wednesdays at Noon on zoom.

Dial 312-626-6799 Meeting ID: 893 5688 8344 Passcode: 11999

To join by a land line or cell phone, dial the number above and then enter the meeting ID and passcode when prompted.

Emmanuel Lutheran Church, 920 Third Avenue, Rockford, IL 61104
Mailing address, P. O. Box 4362, Rockford, IL 61110
815-963-4815 Fax: 815-963-4808 emmanuelchurch07@gmail.com elcrockford.org
Pastor Frank Langholf, phone 309-509-5241, email: fslangholf@gmail.com

Date: April 26, 2026
Theme: Earth Day

Prelude: Selection by Clea Arbogast

Welcome: Pastor Frank Langholf

Meditation: "We do not inherit the earth from our ancestors, we borrow it from our children." — Native American Proverb

Our Community Declaration:

**Guided by Spirit's Wisdom, Inspired by Creator's Imagination,
Centered in Christ's Love, and knowing that God is our Source,
Emmanuel is a Spiritual Community that is progressive, inclusive, creative, and
called to serve.**

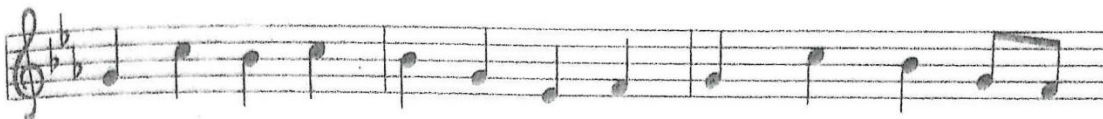
Opening of the Heart —Wendy Lucas (from the Chumash tribe)

*We pray to the ocean we stand before
and that our families have stood before forever.
We pray to the ocean inside our bodies,
and in the bodies of those that are loved-
land people, sky people, and those that reside in all the waters of the earth.
We pray that we remember the teachings
of breathing together for ourselves and for each other.*

Proclamation of Grace:

Presider: The Good News is we are beloved children of God. We live in the promise of Christ, and NOTHING can ever separate us from God's love.

Gathering Song: Can You Feel the Seasons Turning (ACS 1065)



1 Can you feel the sea - sons turn - ing, winds and waves grown
2 Can you hear the crea - tures cry - ing - lynx and ot - ter,
3 Can you feel the sea - sons turn - ing? Storm clouds gath - er



wild and strange? Can you feel cre - a - tion groan - ing.
wolf and whale? Can you hear the Spir - it sigh - ing
in the skies. All a - round us signs of warn - ing



fear - ful of the com - ing change: ice - caps melt - ing,
as her chil - dren grieve and fail? Na - ture's poor, the
bid us o - pen fright - ened eyes. Called by God to



o - ceans ris - ing, homes and hab - i - ta - tions lost?
first to suf - fer, pay the price of hu - man greed.
serve as stew - ards till earth's gar - den greens and thrives,



Can you feel the sea - sons turn - ing? Can you count the bit - ter cost?
Can you hear the crea - tures cry - ing, beg - ging us to stop and heed?
can we learn in time to lis - ten? Can we turn and change our lives?

First Reading —Artemis II Astronaut Victor Glover (Easter Day, 2026)

You guys are talking to us because we're in a spaceship really far from Earth, but you're on a spaceship called Earth that was created to give us a place to live in the universe. Maybe the distance we are from you makes you think what we're doing is special, but we're the same distance from you. And I'm trying to tell you — just trust me — you are special.

In all of this emptiness — this is a whole bunch of nothing, this thing we call the universe — you have this oasis, this beautiful place that we get to exist together. I think, as we go into Easter Sunday, thinking about all the cultures all around the world, whether you celebrate it or not, whether you believe in God or not, this is an opportunity for us to remember where we are, who we are, and that we are the same thing, and that we've gotta get through this together.

Second Reading— A Vision— by Wendell Berry

If we will have the wisdom to survive,
to stand like slow-growing trees
on a ruined place, renewing, enriching it,
if we will make our seasons welcome here,
asking not too much of earth or heaven,
then a long time after we are dead
the lives our lives prepare will live
there, their houses strongly placed
upon the valley sides, fields and gardens
rich in the windows. The river will run
clear, as we will never know it,
and over it, birdsong like a canopy.
On the levels of the hills will be
green meadows, stock bells in noon shade.
On the steeps where greed and ignorance cut down
the old forest, an old forest will stand,
its rich leaf-fall drifting on its roots.
The veins of forgotten springs will have opened.
Families will be singing in the fields.

Continued...

In their voices they will hear a music
risen out of the ground. They will take
nothing from the ground they will not return,
whatever the grief at parting. Memory,
native to this valley, will spread over it
like a grove, and memory will grow
into legend, legend into song, song
into sacrament. The abundance of this place,
the songs of its people and its birds,
will be health and wisdom and indwelling
light. This is no paradisaal dream.
Its hardship is its possibility.

Scripture/Meditation Song: As the Deer Pants For the Water

**As the deer pants for the water so my soul longs after You.
You alone are my heart's desire and I long to worship You.
You alone are my strength and shield,
To You alone may my spirit yield,
You alone are my heart's desire and I long to worship You.**

Scripture: Psalm 8 —from Nan Merrill’s Psalms for Praying

O Love, my Beloved,
How powerful is your Name in all the earth!
You, whose glory is sung in heaven
by the angels and saints,
Who with the innocence and
spontaneity of a child,
Confound those who are mighty and proud,
You comfort the unloving and fearful.
When I look up at the heavens,
at the work of Love’s creation,
at the infinite variety of your Plan,
What is woman that You rejoice in her,
And man that You do delight in him?
You have made us in your image,
You fill us with your Love;
You have made us co-creators of the earth!
guardians of the planet!
to care for all your creatures,
to tend the land, the sea,
and the air we breathe;
all that You have made,
You have placed in our hands.
O Love, my Beloved,
How powerful is your Name in all the earth!
Presider: These are the words of an early Jewish community.

All: May we find wisdom for our living.

Sermon: Pastor Frank Langholz

Offering

Presider: We take this time now to offer our gifts and intentions.

Special Music: Selection by Josh and Kelli Luebke

Time for Gratitude

Prayer Song and Response: **Calm to the Waves (ELWW 794)**

Calm to the waves. Calm to the wind. Je - sus whis - pers, "Peace, be still."

Balm to our hearts. Fears at an end. In still - ness, hear his voice.

The image shows a musical score for a prayer song. It consists of four staves of music. The first two staves are for the first line of lyrics, and the last two staves are for the second line. The music is written in a key with one sharp (F#) and a common time signature (C). The melody is primarily in the treble clef, with a bass line in the bass clef. The lyrics are: "Calm to the waves. Calm to the wind. Je - sus whis - pers, 'Peace, be still.'" and "Balm to our hearts. Fears at an end. In still - ness, hear his voice." The score ends with a double bar line and a repeat sign.

Prayers of the People

Allison, Julaine, Ray, Wanie, Norm, Jennie,
Deborah, Jerry, Miguel, Steve, Jim,
Andrea, Ruth Ann.

The Lord's Prayer – for two voices

Our Father, who art in heaven...

You are also at home in the air, the soil, the forests and the oceans,

Hallowed be Your name...

by the care we take of your creation,

Your kingdom come...

all that you see is good,

Your will be done on earth as it is in heaven...

Your will to till and care,

Give us this day our daily bread...

that all may have sufficient to live life in fullness,

Forgive us our trespasses...

our greed, our exploitation, our lack of concern for other species and for future generations,

As we forgive those who trespass against us...

by reconciliation with justice and peace,

Lead us not into temptation...

the temptation to equate dominion with exploitation,

And deliver us from evil...

the evil of destroying your gift of creation,

For Yours is the Kingdom...

Yours Lord, not ours,

The Power and the Glory...

in the cross and the resurrection,

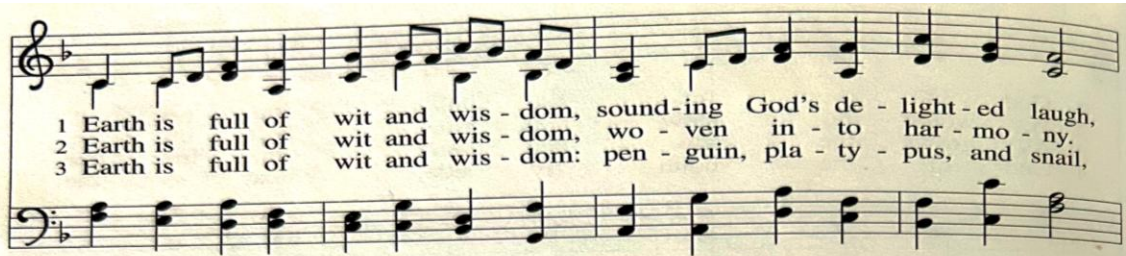
For ever and ever...

And so be it.

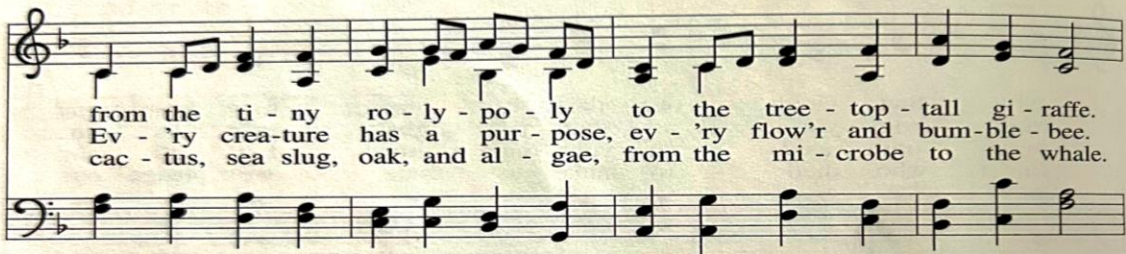
Amen.

Announcements

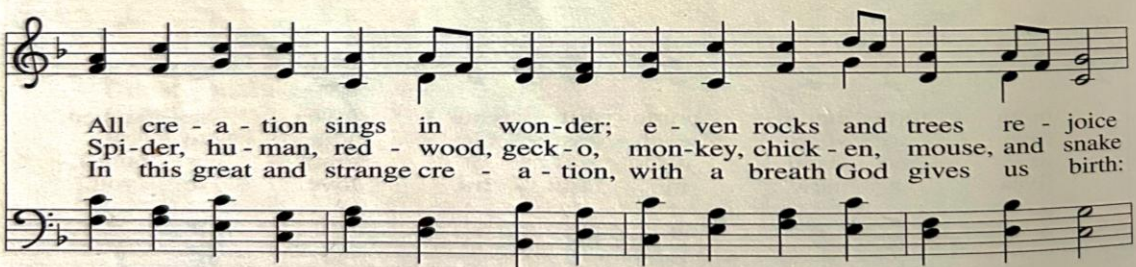
Sending Song:



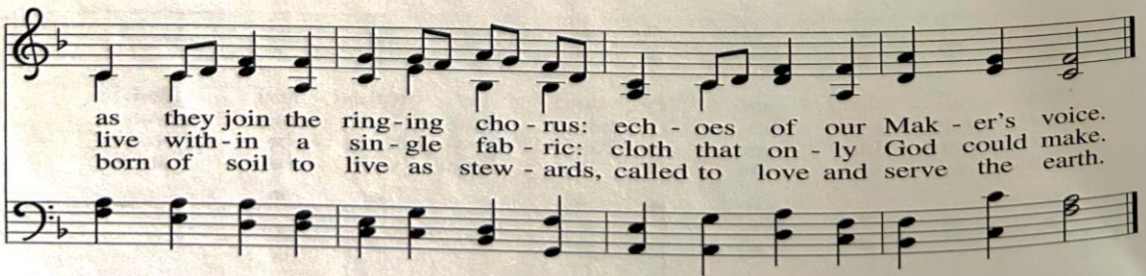
1 Earth is full of wit and wis - dom, sound - ing God's de - light - ed laugh,
2 Earth is full of wit and wis - dom, wo - ven in - to har - mo - ny,
3 Earth is full of wit and wis - dom: pen - guin, pla - ty - pus, and snail,



from the ti - ny ro - ly - po - ly to the tree - top - tall gi - raffe.
Ev - 'ry crea - ture has a pur - pose, ev - 'ry flow'r and bum - ble - bee.
cac - tus, sea slug, oak, and al - gae, from the mi - crobe to the whale.



All cre - a - tion sings in won - der; e - ven rocks and trees re - joice
Spi - der, hu - man, red - wood, geck - o, mon - key, chick - en, mouse, and snake
In this great and strange cre - a - tion, with a breath God gives us birth:



as they join the ring - ing cho - rus: ech - oes of our Mak - er's voice.
live with - in a sin - gle fab - ric: cloth that on - ly God could make.
born of soil to live as stew - ards, called to love and serve the earth.

Benediction/Sharing of Peace



Church Cleaning

"Keep The
Church
Clean"

Spring Clean-up - April 30th – 9:00 – Noon

**Join the crew for a great morning
of spiffing up the grounds,
and then, the coffee & donuts**

Soul Garden Hike - Thursday, May 7th 10:00am

Oak Ridge Forest Preserve, 8322 Blomberg Road, Cherry Valley, IL 61016

Please call or text Holly, 815-543-1191, if you are planning on coming to hike.

Arts@Emmanuel will be having a jewelry sale

Sunday, May 17th, 1:00-3:00 pm in Emmanuel's Celebration Room

All are welcome. Enter by North Entrance

"Chrysalis: the re-invention of the Human"

Join us for another original by Jim Roberts and produced by David Stocker

Saturday May 2, 4:00–5:30pm in the Underground Emmanuel Theatre, a story told through a synergy of story, dance, music, and drama. No cost. Everyone welcome.

ELB will be back for two dates May 2nd and May 30, 7:00 – 10:00pm

Chrysalis
a story of human emergence
May 2. 4pm

Throes of Anthropocene May 2
featuring art by suecoe.com

ELB 7-10 pm Throes Bands with TJ
Chai Tea * Super Brick * Snow in June

ArtSEEN Throes Gallery Opening
April 24-25. 4-9pm

Emmanuel Lutheran Basement
920 Third Ave. Rockford

Interfaith Potlucks: All women are invited to attend the interfaith potlucks, listed below, which start at 6:00 p.m. Please bring a dish to pass. Plates, silverware, and beverages will be provided, but you are always welcome to bring your own plate and silverware if you wish.

-Monday, April 27, 2026, at the Lakewood Hills Shelter House, 4188 Lakeside Drive, Rockford. Rev. Joyce Palmer will speak about Nonviolent Communication, developed by Dr. Marshall Rosenberg. This is a practical communication tool designed to help us connect across differences.



Artist: Marsha Goodheart

Arts at Emmanuel A@E
invites you to join us for an
evening of art & inspiration

Nurture

Opening Reception
& Market

Friday, May 1

5:00-8:30

The Gallery at Emmanuel
920 Third Ave. Rockford

Enter North door off of parking lot

Nurture is a mixed media art exhibit that focuses on artists' perspective of the concept of *Nurture*. We invite you to join us to experience the inspiration and expressive interpretation of *Nurture* through art.

Artists exhibiting:

Marsha Goodheart, Barbara McNamara, Deborah Lucas, Tom Doerr
Barbara Berney, Jenny Matthews, Laura Gomel, Wren Medina
Norm Knott, Sadie Hoessrich, Clea Arbogast, Micah Green, Vintie Hoya
Ronda McCaskey, Jean Apgar, Becca Houlihan, Maya Simmons
Caitlyn Jahn, Kay Montgomery, Justin Montgomery, and Greg LaMont

If you would like more information, please contact Susan Hurley-Whitacre
at 708-845-7207 or susanhurley2010@gmail.com